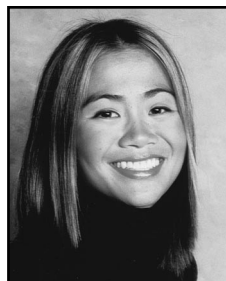


# Jennifer Rosales

(Row-SAH-less)



**Rookie year:** 2000

**Status:** Exempt

**Career victories (last):** 2 (2005)

**Career-low round:** 64

**Career earnings (rank):** \$2,199,986 (74)

**LPGA career holes-in-one:** 1

**Playoff record:** 0-1

**Education:** University of Southern California

## Professional

### 2007

- Carded season-low 68 in the third round of the Safeway International Presented by Coca-Cola and in the second round of the Michelob ULTRA Open at Kingsmill.

### 2007 Stats (rank)

Rds under par: 7/39 (121)	Rds in the 60s: 4/39 (80)	Birdies: 91 (126)
Eagles: 1 (84)	Greens in reg: 55.1% (140)	Driving accuracy: 58.4% (133)
Sand saves: 42.9% (38)	Putts per GIR: 1.85 (76)	Driving avg: 246.1 (92)

### Career

- In 2006, best finish was a tie for 29<sup>th</sup> at the Kraft Nabisco Championship.
- In 2005, won her second career title at the SBS Open at Turtle Bay; posted seven additional top-20 finishes; crossed the \$2 million mark in career earnings at the CJ Nine Bridges Classic Presented by Sports Today; partnered with Dorothy Delasin to represent the Philippines and tied for second at the Women's World Cup of Golf, an unofficial LPGA event.
- In 2004, became a Rolex First-Time Winner and the first player from the Philippines to win on the LPGA Tour at the Chick-fil-A Charity Championship hosted by Nancy Lopez, where she posted a season-low 65 in the final round and crossed the \$1 million mark in career earnings; recorded her first LPGA career hole-in-one during the first round of the State Farm Classic.
- In 2003, tied for second at the Giant Eagle LPGA Classic, where she lost in a four-way, three-hole sudden-death playoff to Rachel (Hetherington) Teske; carded a career-low 64 during the second round.
- In 2002, best finish was a tie for fourth at the Weetabix Women's British Open.
- In 2001, tied for third at The Office Depot for her best finish of the season.
- In 2000, best finish came at the U.S. Women's Open, where she tied for 12<sup>th</sup>.
- In 1999, tied for seventh at the LPGA Final Qualifying Tournament to gain exempt status for the 2000 season.

## Amateur

Rosales was a five-time champion of the Philippine Ladies Amateur Open (1994-98). In 1998, as a competitor on the USC women's golf team, she won the NCAA individual championship as a freshman and won the *Golf World* Invitational.

## Personal

5'5"...Started playing golf at the age of 12...Credits her parents as the individuals most influencing her career...

Has three siblings: Gerald, Michelle and Martin...Enjoys shopping, watching movies and playing with her dogs...Qualified for the Tour on her first attempt.

## LPGA Victories, Awards, Etc.

**LPGA Victories (2):** 2004 Chick-fil-A Charity Championship hosted by Nancy Lopez. 2005 SBS Open at Turtle Bay.

## Major Championship History

	00	01	02	03	04	05	06	07	
<b>KNC</b>	DNP	DNP	DNP	T9	T58	T35	T29	MC	
<b>LPGA</b>	T40	MC	T47	T11	T13	T16	WD	DNP	
<b>OPEN</b>	T12	MC	T7	T13	4	T23	WD	DNP	
<b>DM/WBO</b>	MC^	MC	T4	T24	T35	WD	DNP	DNP	

^ indicates finishes in the du Maurier Classic.

## Rosales' LPGA Record

Information above the line indicates record before originally qualifying for the LPGA Tour.

<b>Year</b>	<b># of events</b>	<b>Cuts made</b>	<b>Wins</b>	<b>2nd</b>	<b>3rd</b>	<b>Top 10s</b>	<b>Best finish</b>	<b>Earnings</b>	<b>Rank</b>	<b>Scoring average</b>
<b>1999</b>	1	0	0	0	0	0	MC	N/A	N/A	76.00
<b>2000</b>	23	15	0	0	0	0	T12	\$109,075	79	72.94
<b>2001</b>	26	12	0	0	1	2	T3	94,879	87	73.43
<b>2002</b>	26	18	0	0	0	4	T4	342,887	30	72.46
<b>2003</b>	20	16	0	1	0	6	T2	366,564	32	71.42
<b>2004</b>	21	20	1	0	0	5	1	693,625	10	71.18
<b>2005</b>	23	18	1	1	0	3	1	514,279	26	71.85
<b>2006</b>	16	6	0	0	0	0	T29	48,113	124	74.24
<b>2007</b>	16	6	0	0	0	0	T31	30,564	138	74.64