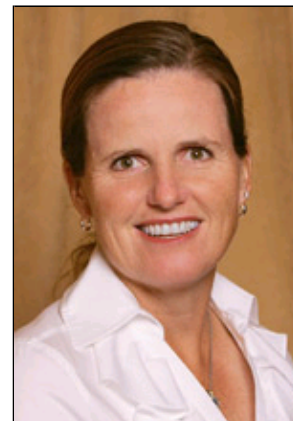


# Lorie Kane

Rookie year:	1996
Priority List Category:	2
LPGA Career Victories:	4
Career Earnings (rank):	\$6,780,215(16)
Career Low Round:	61
Education:	Acadia University in Nova Scotia
LPGA Career Holes In One:	4
Playoff Record:	2-7



Year	Events	Cuts Made	Wins	2nd	3rd	Top 10s	Best Finish	Earnings	Rank	Scoring Average
1996	9	4	0	0	0	1	08T	\$28,585	127	73.04
1997	30	28	0	4	0	8	02	\$425,964	11	71.47
1998	32	29	0	1	2	12	02T	\$508,249	12	71.23
1999	30	29	0	3	2	13	02	\$757,844	5	70.62
2000	30	26	3	1	1	13	01	\$929,189	5	71.38
2001	27	26	1	2	2	14	01	\$947,489	4	70.59
2002	26	23	0	2	1	12	02	\$685,520	11	71.09
2003	27	25	0	3	1	11	02	\$682,752	15	70.97
2004	26	25	0	1	0	8	02	\$530,078	21	71.31
2005	26	22	0	0	0	4	04	\$698,763	15	72.28
2006	28	22	0	0	0	2	06T	\$307,301	42	72.13
2007	23	16	0	0	0	1	04T	\$138,465	74	73.19
2008	22	9	0	0	0	0	31T	\$57,015	131	73.43
2009	17	4	0	0	0	0	47T	\$19,074	134	74.39
2010	13	7	0	0	0	0	11T	\$63,942	86	72.72

Tournament	1991	1992	1993	1994	1995	1996	1997	1998	1999	2000
KNC	DNP	DNP	DNP	DNP	DNP	DNP	DNP	18T	29T	35T
LPGA	DNP	DNP	DNP	DNP	DNP	DNP	16T	30T	26T	MC
OPEN	DNP	DNP	DNP	DNP	DNP	DNP	48T	19T	04	17T
DM/WBO	MC^	DNP	DNP	DNP	DNP	36T	30T	MC	06T	05T
Tournament	2001	2002	2003	2004	2005	2006	2007	2008	2009	2010
KNC	42T	09T	39T	35T	08	58T	MC	DNP	DNP	DNP
LPGA	12T	33T	34T	49T	46T	MC	62T	40T	MC	64T
OPEN	07T	18T	22T	29T	04T	24T	DNP	DNP	DNP	MC
DM/WBO	46T	MC	19T	MC	58T	06T	MC	DNP	DNP	DNP

## Professional

### 2010

- Finished tied for 11th at the CN Canadian Women's Open.

## Career

- In 2009, recorded her fourth LPGA career hole-in-one during the final round of the LPGA Corning Classic.
- In 2008, best finish was a tie for 31st at the LPGA Corning Classic.
- In 2007, best finish was a tie for fourth at the Longs Drugs Challenge.
- In 2006, posted two top-10 finishes: a tie for sixth at the Weetabix Women's British Open, where she also recorded the third hole-in-one of her LPGA career during the final round, and a tie for 10th at the Longs Drugs Challenge.
- In 2005, finished fourth at the Evian Masters, where she crossed the \$6 million mark in career earnings.
- In 2004, finished second at the Safeway Classic Presented by Pepsi, where she lost on the first hole of a sudden-death playoff to Hee-Won Han; crossed the \$5 million mark in career earnings at the Kraft Nabisco Championship.
- In 2003, finished second at the LPGA Corning Classic and tied for second at both the Giant Eagle LPGA Classic, where she lost in a four-way, three-hole, sudden-death playoff to Rachel (Hetherington) Teske, and Welch's/Fry's Championship, where she recorded a career-low 61 during the opening round.
- In 2002, lost in a one-hole, sudden-death playoff to Annika Sorenstam at the LPGA Takefuji Classic; posted her second LPGA career hole-in-one during the third round of the Kraft Nabisco Championship; crossed the \$4 million mark in career earnings following the Williams Championship; successfully defended her Hyundai Team Matches title with teammate Janice Moodie.
- In 2001, won her fourth career title at the LPGA Takefuji Classic, where she held off a charging Annika Sorenstam with a 66 in the final round; partnered with Janice Moodie to win the Hyundai Team Matches, an unofficial LPGA event; crossed the \$3 million mark in career earnings after tying for seventh at the U.S. Women's Open.
- In 2000, after nine career runner-up finishes, broke into the winner's circle with an emotional victory at the Michelob Light Classic; won again at the New Albany Golf Classic by defeating Mi Hyun Kim on the first hole of a sudden-death playoff; captured her third title at the Mizuno Classic by defeating Sophie Gustafson on the first hole of a sudden-death playoff; crossed the \$2 million mark in career earnings after tying for 17th at the U.S. Women's Open.
- In 1999, placed second three times: the Standard Register PING, the Chick-fil-A Charity Championship, where she lost to Rachel Hetherington after the first hole of a sudden-death playoff, and the Japan Airlines Big Apple Classic, where she lost to Sherri Steinhauer after the fifth hole of a sudden-death playoff; crossed the \$1 million mark in career earnings.
- In 1998, best finish was a tie for second at the Chick-fil-A Charity Championship, where she recorded her first LPGA career hole-in-one during the second round.
- In 1997, finished second at the Toray Japan Queens Cup and tied for second at the Susan G. Komen International, State Farm Rail Classic (lost to Cindy Figg-Currier in a sudden-death playoff) and ITT LPGA Tour Championship (lost to Annika Sorenstam in a sudden-death playoff).
- In 1996, best finish was a tie for eighth at the PING Welch's Championship in Boston; returned to the LPGA Final Qualifying Tournament, where she finished third to earn exempt status for the 1997 LPGA season.
- In 1995, tied for 48th at the LPGA Final Qualifying Tournament to earn non-exempt status for the 1996 LPGA season.
- In 1993, turned professional and competed on the Central Florida Challenge Tour and the du Maurier Ltd. Series in Canada; was the du Maurier Ltd. Series champion in 1994-95 and a Series event winner from 1993-95.

## Amateur

Kane represented her country several times as a member of the Canadian International Team from 1989-92, a member of the Canadian Commonwealth Team in 1991 and a member of the 1992 Canadian World Amateur Team. She also was the Mexican Amateur champion in 1991.

## LPGA Victories, Awards, Etc.

**LPGA Victories (4):** 2000 Michelob Light Classic, New Albany Golf Classic, Mizuno Classic. 2001 LPGA Takefuji Classic.

**Unofficial Victories (2):** 2001 Hyundai Team Matches (with Janice Moodie). 2002 Hyundai Team Matches (with Janice Moodie).

**LPGA Awards (2):** 1998 Heather Farr Player Award. 2000 William and Mousie Powell Award.