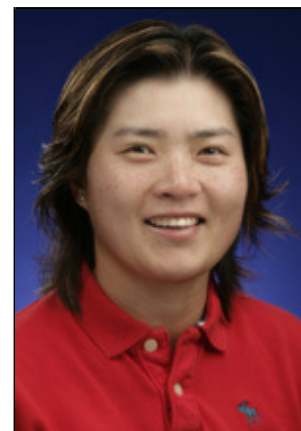


# Yu Ping Lin

|                           |                                          |
|---------------------------|------------------------------------------|
| Rookie year:              | 2000                                     |
| Priority List Category:   | 21                                       |
| Career Earnings (rank):   | \$962,879(187)                           |
| Career Best Finish:       | 03T                                      |
| Career Low Round:         | 64                                       |
| Education:                | Taiwan Physical Education College (1999) |
| LPGA Career Holes In One: | 1                                        |



| Year | Events | Cuts Made | Wins | 2nd | 3rd | Top 10s | Best Finish | Earnings  | Rank | Scoring Average |
|------|--------|-----------|------|-----|-----|---------|-------------|-----------|------|-----------------|
| 2000 | 27     | 19        | 0    | 0   | 0   | 0       | 17T         | \$75,784  | 102  | 72.88           |
| 2001 | 26     | 15        | 0    | 0   | 1   | 4       | 03T         | \$253,771 | 41   | 72.27           |
| 2002 | 24     | 20        | 0    | 0   | 0   | 1       | 10T         | \$166,259 | 56   | 72.71           |
| 2003 | 25     | 18        | 0    | 0   | 0   | 0       | 11T         | \$136,538 | 62   | 72.73           |
| 2004 | 24     | 14        | 0    | 0   | 0   | 1       | 07T         | \$111,844 | 85   | 72.83           |
| 2005 | 20     | 10        | 0    | 0   | 0   | 0       | 22T         | \$62,717  | 101  | 73.92           |
| 2006 | 22     | 8         | 0    | 0   | 0   | 0       | 17T         | \$74,610  | 100  | 73.67           |
| 2007 | 16     | 9         | 0    | 0   | 0   | 1       | 09T         | \$72,848  | 102  | 73.72           |
| 2008 | 13     | 5         | 0    | 0   | 0   | 0       | 30T         | \$8,508   | 170  | 74.08           |

| Tournament | 2000 | 2001 | 2002 | 2003 | 2004 | 2005 | 2006 | 2007 |
|------------|------|------|------|------|------|------|------|------|
| KNC        | DNP  | DNP  | 45T  | 75T  | 62T  | DNP  | DNP  | DNP  |
| LPGA       | 52T  | MC   | MC   | 51T  | 49T  | 54T  | 44T  | 62T  |
| OPEN       | MC   | 57T  | MC   | 56   | DNP  | MC   | 41T  | DNP  |
| DM/WBO     | MC   | 53T  | 29T  | MC   | MC   | 68T  | DNP  | DNP  |

## Professional

### 2008

- Carded a season-low 69 in the first round of the Michelob ULTRA Open at Kingsmill and the third round of the Jamie Farr Owens Corning Classic Presented by Kroger.

### Career

- In 2007, best finish was a tie for ninth at the Corona Championship; led the Tour in driving accuracy with an 81 percent average (465/574 fairways).
- In 2006, best finish was a tie for 17th at the Michelob ULTRA Open at Kingsmill.
- In 2005, best finish was a tie for 22nd at the Wegmans Rochester LPGA.
- In 2004, best finish was a tie for seventh at the Kellogg-Keebler Classic.
- In 2003, best finish was a tie for 11th at the Welch's/Fry's Championship, where she carded career-low 64s in the second and third rounds; notched her first LPGA career hole-in-one during the third round of the Welch's/Fry's Championship.
- In 2002, posted four top-20 finishes, including a season-best tie for 10th at the Wendy's Championship for Children at Tartan Fields.
- In 2001, recorded a career-best tie for third at the Standard Register PING.
- In 2000, best finish was a tie for 17th at the Cup Noodles Hawaiian Ladies Open.
- In 1999, competed on the Futures Tour; qualified for the LPGA Tour by tying for fourth at the LPGA Final Qualifying Tournament to gain exempt status for the 2000 LPGA season.

Amateur

Lin represented her country in the 1998 World Cup competition, where she finished seventh. Also in 1998, she placed third at the Asian Games.