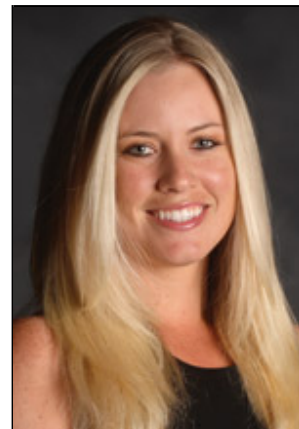


# Brittany Lincicome

Rookie year:	2005
Priority List Category:	1
LPGA Career Victories:	3
Career Earnings (rank):	\$2,638,144(73)
Career Low Round:	64



Year	Events	Cuts Made	Wins	2nd	3rd	Top 10s	Best Finish	Earnings	Rank	Scoring Average
2004	2	2	0	0	0	0	55	N/A	N/A	73.00
2005	20	12	0	0	0	0	18T	\$127,452	72	73.18
2006	23	20	1	0	1	5	01	\$853,013	14	72.08
2007	22	20	1	1	0	4	01	\$871,384	13	72.14
2008	22	11	0	0	0	1	07T	\$114,963	92	73.72
2009	22	15	1	0	0	4	01	\$647,147	21	72.31
2010	2	2	0	0	0	0	26T	\$24,185	24	71.50

Tournament	2004	2005	2006	2007	2008	2009
KNC	DNP	DNP	DNP	02T	MC	01
LPGA	DNP	33T	49T	06T	34T	MC
OPEN	55	31T	07	14T	58T	05
DM/WBO	DNP	MC	56T	11T	MC	28T

## Professional

### 2010

- Tied for 26th at both the season-opening Honda PTT LPGA Thailand and HSBC Women's Champions.

### Career

- In 2009, eagled the 72nd hole to win the Kraft Nabisco Championship, the first major championship of the LPGA Tour season, which was her third career LPGA win and first major championship victory; crossed the \$2 million mark in career earnings; posted a fifth-place finish at the U.S. Women's Open; carded a career-low 64 in the opening round of the Sybase Classic Presented by ShopRite, where she tied for sixth; tied for 10th at the Wegmans LPGA and tied for 11th at the Samsung World Championship; qualified for her second U.S. Solheim Cup Team appearance by finishing ninth on the points list; posted 2-2-0 record for the victorious team.
- In 2008, best finish was a tie for seventh at the Jamie Farr Owens Corning Classic Presented by Kroger.
- In 2007, came from four strokes back to earn her second career LPGA victory at the Ginn OPEN; recorded a tie for second at the Kraft Nabisco Championship, one of three additional top-10 finishes of the season; recorded top-20 finishes in all four major championships; crossed the \$1 million mark in career earnings at the Safeway International Presented by Coca-Cola; was one of four rookies on the victorious U.S. Solheim Cup Team.
- In 2006, became a Rolex First-Time Winner after winning six consecutive matches as the 39th seed at the HSBC Women's World Match Play Championship.
- In 2005, recorded a season-best finish at the ShopRite LPGA Classic, where she tied for 18th; led the Tour with a 270.3 yard driving-distance average.
- In 2004, turned professional in December; tied for 20th at the LPGA Final Qualifying Tournament to earn exempt status for the 2005 LPGA season.

## Amateur

Lincicome had a stellar amateur career that began with a tournament win at age 9. She participated in more than 100 amateur events, winning 60 percent of the time. Lincicome was a star on the American Junior Golf Association (AJGA) circuit, winning three events. In 2004, she won the Harder Hall Invitational and advanced to the round of 16 at the U.S. Women's Amateur Championship. Lincicome competed in the 2004 U.S. Women's Open and led after the first round before finishing 55th. She also played in the State Farm Classic in 2004 as an amateur, finishing in a tie for 66th.

## LPGA Victories, Awards, Etc.

**LPGA Victories (3): 2006 HSBC Women's World Match Play Championship. 2007 Ginn OPEN. 2009 Kraft Nabisco Championship.**

**The Solheim Cup (2): 2007, 2009.**