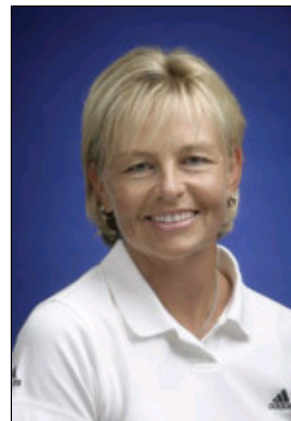


Liselotte Neumann

Rookie year:	1988
Priority List Category:	2
LPGA Career Victories:	13
Career Earnings (rank):	\$5,833,099(22)
Career Low Round:	63
LPGA Career Holes In One:	4
Playoff Record:	2-2
International Victories:	13



Year	Events	Cuts Made	Wins	2nd	3rd	Top 10s	Best Finish	Earnings	Rank	Scoring Average
1988	22	19	1	2	0	4	1	\$188,729	12	72.44
1989	22	17	0	2	1	6	T2	\$119,915	30	72.66
1990	24	16	0	0	0	2	4	\$82,323	51	73.74
1991	23	17	1	0	0	1	1	\$151,367	27	72.91
1992	18	15	0	2	0	2	02T	\$225,667	21	72.00
1993	16	14	0	0	0	1	07T	\$90,776	57	72.54
1994	21	18	3	1	3	8	01	\$505,701	3	71.46
1995	23	22	0	1	1	9	02	\$305,157	16	71.79
1996	24	23	3	2	1	13	01	\$625,633	4	70.94
1997	27	25	2	1	0	7	01	\$497,841	7	71.28
1998	21	19	2	2	1	8	01	\$665,069	5	71.15
1999	27	24	0	1	1	4	02	\$405,142	20	71.70
2000	25	18	0	1	0	2	02T	\$185,309	48	72.96
2001	21	17	0	0	0	1	05T	\$159,719	61	72.40
2002	19	15	0	1	0	4	02	\$295,225	32	72.37
2003	19	16	0	0	0	0	11T	\$108,379	71	72.39
2004	21	12	1	0	0	3	01	\$275,352	43	72.13
2005	21	20	0	1	2	6	02T	\$607,474	22	71.47
2006	21	15	0	0	0	0	12T	\$197,785	64	72.44
2007	19	12	0	0	0	0	21T	\$103,486	86	73.55
2008	17	3	0	0	0	0	15T	\$53,285	135	74.58
2009	9	1	0	0	0	0	MC	N/A	187	76.24
2010	6	1	0	0	0	0	MC	N/A	171	78.27

Tournament	1987	1988	1989	1990	1991	1992	1993	1994	1995	1996
KNC	MC	DNP	T28	MC	T30	26T	40T	11T	32T	10T
LPGA	DNP	DNP	T10	T27	T11	02T	25T	03T	38T	41T
OPEN	MC	1	T20	T54	T15	15	62	03	21T	08T

DM/WBO	DNP^	MC^	MC^	4^	T19^	20T	MC	03	02	06T
Tournament	1997	1998	1999	2000	2001	2002	2003	2004	2005	2006
KNC	16T	05T	58T	72	18T	02	42T	DNP	55T	45T
LPGA	MC	37T	02	MC	12T	52T	67T	MC	31T	29T
OPEN	14T	03	17T	MC	39T	37T	MC	20T	19T	MC
DM/WBO	02	48T	34T	MC	55	35T	MC	MC	05T	31T
Tournament	2007		2008		2009		2010			
KNC	60T		15T		MC		DNP			
LPGA	68		29T		MC		WDC			
OPEN	MC		MC		DNP		DNP			
DM/WBO	MC		DNP		DNP		DNP			

Professional

Career

- In 2009, joined Joanne Morley as assistant captains to Alison Nicholas for the European Solheim Cup Team.
- In 2008, best finish was a tie for 15th at the Kraft Nabisco Championship.
- In 2007, best finish was a tie for 21st at The Mitchell Company LPGA Tournament of Champions.
- In 2006, best finish was a tie for 12th at both the Ginn Clubs & Resorts Open and Corona Morelia Championship; partnered with Annika Sorenstam to win the Women's World Cup of Golf, an unofficial LPGA event.
- In 2005, best finish was a tie for second at the ADT Championship; also finished third at The Mitchell Company Tournament of Champions presented by Kathy Ireland Worldwide and tied for third at the Longs Drugs Challenge; crossed the \$5 million mark in career earnings at the LPGA Corning Classic, where she tied for sixth.
- In 2004, captured her 13th career victory at the Asahi Ryokuken International Championship at MountVintage, her first win since 1998.
- In 2003, best finish was a tie for 11th at the Longs Drugs Challenge.
- In 2002, best finish was second place at the Kraft Nabisco Championship, where she finished one stroke behind Annika Sorenstam, making the first time Swedes placed first and second in a major championship.
- In 2001, best finish was a tie for fifth at The Office Depot Hosted by Amy Alcott.
- In 2000, posted her season-best finish at the Weetabix Women's British Open, where she tied for second and crossed the \$4 million mark in career earnings; as a captain's pick, was a member of the victorious European Solheim Cup Team.
- In 1999, placed second at the McDonald's LPGA Championship, one of the LPGA Tour's four majors.
- In 1998, captured two tournament titles within a five-week span: defeated Rosie Jones in a sudden-death playoff at the Standard Register PING and won the Chick-fil-A Charity Championship; crossed the \$3 million mark in career earnings with her win at the Standard Register PING; carded a career-low 63 during the third round of the City of Hope Myrtle Beach Classic; was a member of the European Solheim Cup Team.
- In 1997, won the Welch's Championship and birdied the 18th hole to win the Toray Japan Queens Cup; recorded her fifth LPGA career hole-in-one during the second round of the Los Angeles Women's Championship; won an event on the Japan LPGA Tour.
- In 1996, won three events, including a four-way, sudden-death playoff at the Edina Realty LPGA Classic; crossed the \$2 million mark in career earnings at the U.S. Women's Open; posted holes-in-one at the Nabisco Dinah Shore and the PING Welch's Championship in Boston; lost to Michelle McGann in a sudden-death playoff at the Oldsmobile Classic; was a member of the European Solheim Cup Team.
- In 1995, recorded her second LPGA career hole-in-one during the third round of the Star Bank LPGA Classic; best finish was second at the du Maurier Ltd. Classic; won an event on both the Women Professional Golfers' European Tour (WPGET) and the Australian Ladies Professional Golf Tour.
- In 1994, recorded her first multiple-win season, capturing the Minnesota LPGA Classic, Weetabix Women's British Open and GHP Heartland Classic titles; was a member of the European Solheim Cup Team; also won two events on the WPGET.
- In 1993, posted five top-20 finishes, including a season-best tie for seventh at the Sprint Classic; won the Hennessey Cup on the WPGET.
- In 1992, posted back-to-back runner-up finishes at the Centel Classic and the Mazda LPGA Championship; was a member of the victorious European Solheim Cup Team, posting a 2-0-1 record.
- In 1991, won the Mazda Japan Classic, her second LPGA win; also captured the IBM Ladies Open title on the WPGET.
- In 1990, best finish was fourth place at the du Maurier Ltd. Classic; was a member of the European Solheim Cup Team.
- In 1989, best finish was a tie for second at the Crestar Classic.
- In 1988, captured the U.S. Women's Open title to become only the 11th LPGA player to win the Open as her first LPGA victory (14 LPGA players have now accomplished that feat); posted her first LPGA career hole-in-one during the Mazda Japan Classic, where she lost to Patty Sheehan in a sudden-death playoff; named LPGA Rookie of the Year; won the BMW German Open on the WPGET.
- In 1987, won the Letting French Open on the WPGET; won the Singapore Open on the Asian Tour; qualified for the LPGA Tour by tying for fourth at the LPGA Final Qualifying Tournament to earn exempt status for the 1988 LPGA season.

- In 1986, won the BMW German Open in the WPGET.
- In 1985, won the IBM European Open and Hoganas Open on the WPGET.

Amateur

Neumann established a notable amateur career in Europe. She was the Swedish Amateur champion in 1982-83 and the Swedish Match Play champion in 1983. She represented Sweden in the European Team Championship in 1984 and the World Team Championship in 1982 and 1984.

LPGA Victories, Awards, Etc.

LPGA Victories (13): 1988 U.S. Women's Open. 1991 Mazda Japan Classic. **1994** Minnesota LPGA Classic, Weetabix Women's British Open, GHP Heartland Classic. **1996** Chrysler-Plymouth Tournament of Champions, PING Welch's Championship, First Bank Presents the Edina Realty LPGA Classic. **1997** Welch's Championship, Toray Japan Queens Cup. **1998** Standard Register PING, Chick-fil-A Charity Championship. **2004** Asahi Ryokuken International Championship at MountVintage.

Unofficial Victories (1): 2006 Women's World Cup of Golf (with Annika Sorenstam).

LPGA Awards (1): 1988 Rookie of the Year.

The Solheim Cup (7): 1990, 1992, 1994, 1996, 1998, 2000, 2009 (assistant captain).