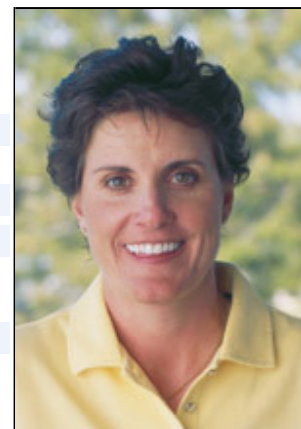


Michele Redman

Rookie year:	1992
Priority List Category:	1
LPGA Career Victories:	2
Career Earnings (rank):	\$5,571,329(26)
Career Low Round:	63
Education:	Indiana University (1988, Public Finance and Management)
LPGA Career Holes In One:	3
Playoff Record:	0-1



Year	Events	Cuts Made	Wins	2nd	3rd	Top 10s	Best Finish	Earnings	Rank	Scoring Average
1992	27	17	0	0	0	0	13T	\$48,706	93	73.48
1993	24	15	0	0	0	0	12T	\$64,518	73	72.61
1994	23	18	0	0	0	3	07T	\$113,918	48	72.05
1995	26	22	0	0	1	6	03	\$195,251	34	72.10
1996	26	20	0	0	0	1	10T	\$87,733	69	72.92
1997	28	19	1	0	0	6	01	\$293,831	25	72.17
1998	27	18	0	1	0	1	02	\$156,950	43	72.50
1999	27	24	0	0	0	6	07	\$273,383	32	71.15
2000	28	25	1	1	1	9	01	\$585,694	10	71.62
2001	27	25	0	0	1	10	03	\$552,317	17	71.04
2002	25	25	0	2	1	10	02T	\$666,849	13	70.80
2003	22	21	0	0	1	7	03	\$468,918	24	71.19
2004	22	21	0	0	0	5	05T	\$473,886	24	71.24
2005	22	20	0	1	1	7	02T	\$540,167	25	71.59
2006	21	16	0	0	0	2	05T	\$307,948	41	71.71
2007	20	15	0	0	0	2	07T	\$186,462	61	72.83
2008	19	18	0	0	0	0	12T	\$234,907	60	72.01
2009	20	15	0	1	0	1	02T	\$316,533	42	72.37
2010	1	1	0	0	0	0	60T	\$3,354	56	76.00

Tournament	1986	1987	1988	1989	1990	1991	1992	1993	1994	1995
KNC	DNP	DNP	DNP	DNP	DNP	DNP	DNP	DNP	DNP	DNP
LPGA	DNP	DNP	DNP	DNP	DNP	DNP	64T	MC	MC	29T
OPEN	T30	DNP	DNP	DNP	DNP	DNP	DNP	22T	MC	20
DM/WBO	DNP^	DNP	DNP	DNP	DNP	DNP	MC	MC	31T	25T
Tournament	1996	1997	1998	1999	2000	2001	2002	2003	2004	2005
KNC	54T	DNP	42T	13T	04T	18T	25T	21T	22	58T

LPGA	41T	MC	18T	MC	17T	10T	06T	11T	MC	49T
OPEN	14T	07T	49T	14T	23T	16T	22T	39T	05T	MC
DM/WBO	23T	41T	14T	13T	50T	MC	DNP	37T	05T	11T
Tournament			2006	2007	2008	2009				
KNC			11T	65T	21T	12T				
LPGA			39T	46T	58T	31T				
OPEN			MC	MC	70	40T				
DM/WBO			MC	42T	DNP	17T				

Professional

Career

- In 2009, recorded a season-best runner-up finish at the Safeway Classic Presented by Coca-Cola, where she and Suzann Pettersen lost to rookie M.J. Hur in a two-hole, sudden-death playoff.
- In 2008, best finish was a tie for 12th at the Wegmans LPGA; carded her third LPGA career hole-in-one during the final round of the Kraft Nabisco Championship, where she tied for 12th.
- In 2007, best finish was a tie for seventh at the LPGA State Farm Classic, where she crossed the \$5 million mark in career earnings.
- In 2006, best finish was a tie for fifth at the Ginn Clubs & Resorts Open.
- In 2005, best finish was a tie for second at the ADT Championship; tied for sixth at the MasterCard Classic *honoring Alejo Peralta*, where she crossed the \$4 million mark in career earnings; was a member of the victorious U.S. Solheim Cup Team.
- In 2004, best finishes were ties for fifth at the U.S. Women's Open and the Weetabix Women's British Open.
- In 2003, best finish of the season was third place at the Wendy's Championship for Children at Tartan Fields, where she tied her career-low score of 63 in the second round; recorded six additional top-10 finishes; competed in her third Solheim Cup, posting a 2-0-1 record.
- In 2002, best finish was a tie for second at both the Kellogg-Keebler Classic and Bank of Montreal Canadian Women's Open; crossed the \$3 million mark in career earnings following the CISCO World Ladies Match Play Championship, where she tied for fifth; was a member of the victorious U.S. Solheim Cup Team.
- In 2001, best finish was third at the Longs Drugs Challenge, where she crossed the \$2 million mark in career earnings; recorded the second hole-in-one of her LPGA career during the third round of the Welch's/Circle K Championship.
- In 2000, captured her second career win at the First Union Betsy King Classic with all three rounds in the 60s (68-66-68); her win came in the second-to-last tournament in which players could earn Solheim Cup points, helping her to become one of three "rookies" to qualify for the U.S. Team.
- In 1999, best finish was seventh place at The Office Depot; crossed the \$1 million mark in career earnings with a tie for ninth at the Sunrise Hawaiian Ladies Open.
- In 1998, best finish was second place at the State Farm Rail Classic, where she posted a career-low 63 during the second round.
- In 1997, became a Rolex First-Time Winner at the JAL Big Apple Classic and posted five additional top-10 finishes.
- In 1996, posted three top-20 finishes, including a season-best tie for 10th at the Chick-fil-A Charity Championship.
- In 1995, best finish was third place at the Star Bank LPGA Classic.
- In 1994, season-best finish was a tie for seventh at the Rochester International.
- In 1993, totaled six top-20 finishes, including a tie for 12th at both the Jamie Farr Toledo Classic and the *Sun-Times* Challenge.
- In 1992, posted her first LPGA career hole-in-one during the second round of the Sega Women's Championship; best finish was a tie for 13th at the Welch's Classic.
- In 1991, qualified for the Tour by tying for eighth at the LPGA Final Qualifying Tournament to earn exempt status for the 1992 LPGA season.
- Prior to qualifying for the LPGA Tour, played on the Futures Tour for three years, where she won three events and posted several top-10 finishes.

Amateur

Redman was the 1983 Ohio State Junior champion. In 1986, she was a quarterfinalist at the U.S. Women's Amateur Championship and finished as the second-lowest amateur at the U.S. Women's Open. She played collegiate golf at Indiana University, where she won four tournaments, twice was named an All-American and four times earned All-Big Ten Conference honors. In addition, she was the Big Ten Conference champion in 1987.

LPGA Victories, Awards, Etc.

LPGA Victories (2): 1997 JAL Big Apple Classic. 2000 First Union Betsy King Classic.

The Solheim Cup (4): 2000, 2002, 2003, 2005.

